

Health & Medical Geography Specialty Group

Spring 2023 Newsletter



GREETINGS FROM THE CHAIR

Paul L. Delamater



When I took over as chair from Dr. Michael Desjardins, I told him that my only goal was "to keep the train on the tracks." Barring catastrophe between the moment I am writing this letter and the end of my term, I can confidently say that I have successfully achieved this goal. Our specialty group remains extraordinarily strong with more than 430 members. We are sponsoring or co-sponsoring 67 sessions at the 2023 AAG Conference, and the 2023 Geospatial Health Research Symposium includes 30 sessions. This year, we had extremely high participation in our contests, receiving an extraordinary number of submissions and nominations.

Yet, despite these successes, the one thing that has become crystal clear to me as Vice Chair and Chair is that the true strength of our group is not found in the number of members, sessions, or nominations, but in the generosity, benevolence, and steadfast dedication of our members. Over the last two years, time and time again I have witnessed HMGS G members, from undergraduate students to emeritus professors, step up when called on as organizers, presenters, nominators, reviewers, and numerous other roles. This has been truly inspirational for me to witness.

While keeping the train on the tracks this year, I was also able to oversee a highly productive year for our Board. Behind the scenes, we started a major reorganization of the group's digital files and documents from prior years. We conducted a successful contest to design a new HMGS G logo (the winner will be announced at this year's Business Meeting). Further, we will be proposing major edits to the HMGS G Bylaws, which have become quite outdated.

It has been an honor to serve as HMGS G Board Chair. I send my sincere thanks to this year's Board, who were a pleasure to collaborate with and worked so well together to get everything done. I am excited to see what incoming Chair Dr. Amber Pearson and next year's Board will accomplish!

**NEW LOGO
COMING
SOON!**

CONTENTS

Greetings from the Chair
HMGS G Board members
2022 Award Winners
Open Board Positions
Sessions at AAG 2023
2023 Keynote Speaker
2023 Emerging Scholar Session
Undergraduate Student Mentoring Panel
HMGS G Social Event at AAG 2023
Member Pubs, Grants, and News

BOARD MEMBERS 2022-23

Chair

Paul Delamater, 2022-23
University of North Carolina at
Chapel Hill

Vice Chair

Amber Pearson, 2022-23
Michigan State University

At Large

Arrianna Planey, 2021-23
University of North Carolina at
Chapel Hill

Sadie Ryan, 2021-23
University of Florida

Yoonjung Ahn, 2022-24
University of Colorado

Aída Guhlincozzi, 2022-24
University of Missouri

Graduate Student

Amber DeJohn, 2022-23
University of Toronto

Penelope Mitchell, 2022-23
University of Alabama

Undergraduate Student

Dayani Davilla, 2021-23
University of North Texas

Website Manager

Mattie Kelepile, 2022-
University of Botswana

2022 HMGS G AWARD WINNERS



Melinda S. Meade Distinguished Scholar in Health and Medical Geography
Dr. Graham Moon
 Professor Emeritus, University of Southampton

Emerging Scholar in Health and Medical Geography
Dr. Marynia Kolak
 Senior Lecturer of GIScience, University of Chicago



Jacques May Thesis Award (PhD)
Dr. Aída R. Guhlincozzi
 University of Illinois at Urbana-Champaign, *Latina Health Geographies and Intervening Community-Based Organizations in the Chicago Suburbs*

Dr. Amanda Hoffman-Hall
 University of Maryland, *Interdisciplinary Geospatial Assessment of Malaria Exposure in Ann Township, Myanmar*

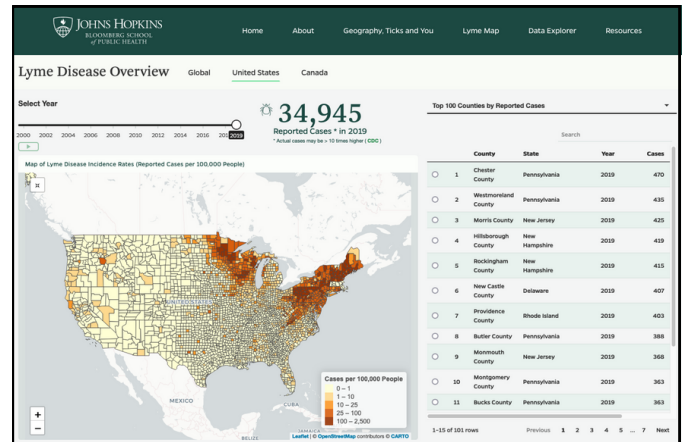
Peter Gould Student Paper Award (Graduate)
Rebecca Steed
 University of Utah, *Evidence for Transgenerational Effects on Autism Spectrum Disorder Using Multigenerational Space-time Cluster Detection*

Changzhen Wang
 Louisiana State University, *Delineation of Cancer Service Areas Anchored by Major cancer Centers in the USA*

Melinda S. Meade Travel Awards
Yoonjung Ahn Florida State University
Lukman Fashina East Tennessee St University
Shamayeta Bhattacharya University of Connecticut
Suraiya Parvin Penn State University
Kyunghee Ryu University of Texas - Dallas

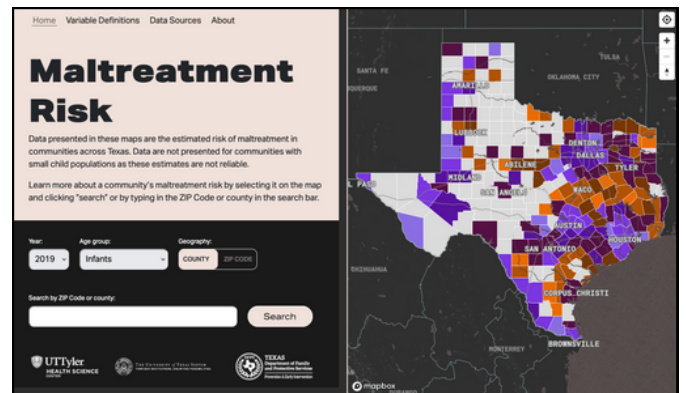
Health Data Visualization Contest Winners
Dynamic Mapping Group

Lyme and Tickborne Disease Dashboard



Frank C. Curriero, Cara Wychgram, Alison W. Rebman, Anne E. Corrigan, Anton Kvit, Timothy Shields, John N. Aucott

Community-Level Maltreatment Risk in Texas: A Web-Based Data Dashboard for Communities



Dorothy Mandell, Molly O'Neil, Mohamad Karimifar

OPEN BOARD POSITIONS

We are seeking nominations for positions on our Board. All HMGS G members are eligible to serve. Self-nominations are accepted and encouraged. If you are interested in serving, please email Paul Delamater (pld@email.unc.edu).

Nomination deadline is March 10th, 2023!

- Vice-Chair (1 year term, then 1 year as Chair)
- 2 At-Large Members (2 year term)
- 2 Graduate Student Members (2 year term)
- Undergraduate Student Member (1-2 year term)



HMGS G SESSIONS AT 2023 AAG ANNUAL CONFERENCE

Featured Session | * Geospatial Health Research Symposium Session | *Virtual Session*

Thursday, March 23, 2023

Symposium on Human Dynamics Research--Advancing Knowledge in Social-Environment Interactions and Human Health 1, 3/23/2023, 8:30 AM-9:50 AM MT

Symposium on Geospatial Approaches to Pressing Grand Challenges: Global Pandemics, Climate Change, and Food Security: Geospatial Techniques for Pressing Social and Environmental Challenges, 3/23/2023, 8:30 AM-9:50 AM MT

* *Hazards, Risks, and Disasters (Virtual) 1: Public Health Hazards*, 3/23/2023, 8:30 AM-9:50 AM MT

* Spatial Accessibility, 3/23/2023, 10:20 AM-11:40 AM MT

Symposium on Human Dynamics Research--Advancing Knowledge in Social-Environment Interactions and Human Health 2, 3/23/2023, 10:20 AM-11:40 AM MT

Symposium on Geospatial Approaches to Pressing Grand Challenges: Global Pandemics, Climate Change, and Food Security: Opening Plenary, 3/23/2023, 10:20 AM-11:40 AM MT

* Spatial inequities in substance use and co-occurring disorders, 3/23/2023, 12:50 PM-2:10 PM MT

Symposium on Geospatial Approaches to Pressing Grand Challenges: Global Pandemics, Climate Change, and Food Security: The Role of Geospatial Technology in Tackling Climate Change and Supporting Sustainable Development, 3/23/2023, 12:50 PM-2:10 PM MT

Emerging Research Methods for Community-Based Health Interventions in Neighborhood Resilience 1, 3/23/2023, 2:40 PM-4:00 PM MT

Grand Challenges: Global Pandemics, Climate Change, and Food Security: Understanding Our Natural and Urban Environments-- Challenges, 3/23/2023, 2:40 PM-4:00 PM MT

* Health Care Utilization and Vaccination, 3/23/2023, 2:40 PM-4:00 PM MT

Symposium on Geospatial Approaches to Pressing Grand Challenges: Global Pandemics, Climate Change, and Food Security: Characterizing the Impact from the COVID-19 Global Pandemic, 3/23/2023, 4:30 PM-5:50 PM MT

Emerging Research Methods for Community-Based Health Interventions in Neighborhood Resilience 2, 3/23/2023, 4:30 PM-5:50 PM MT

* Food Environments and Access, 3/23/2023, 4:30 PM-5:50 PM MT

Symposium on Geospatial Approaches to Pressing Grand Challenges: Global Pandemics, Climate Change, and Food Security: COVID-19 in Cities: Transmission, Infection and Response, 3/23/2023, 6:00 PM-7:20 PM MT

Symposium on Geospatial Approaches to Pressing Grand Challenges: Global Pandemics, Climate Change, and Food Security: Harnessing the Power of Geospatial Data and Tech for a Better Urban Living Environment, 3/23/2023, 6:00 PM-7:20 PM MT



2023 KEYNOTE SPEAKER KIRSTEN BEYER

March 26, 2023
10:20 AM (MT)

Associate Professor, Division of Epidemiology, Medical College of Wisconsin

Dr. Beyer's work focuses on the intersection of health, place, and social justice. Her research passion is to identify environmental and systematic causes of health disparities, and to apply a translational research framework, including community engaged research, to move research findings into program and policy interventions to close the gaps.



HMGS G SESSIONS AT 2023 AAG ANNUAL CONFERENCE

Featured Session | * Geospatial Health Research Symposium Session | *Virtual Session*

Friday, March 24, 2023

- * Geospatial Approaches to Cancer Epidemiology 1: Risk Factors and Disparities, 3/24/2023, 8:30 AM-9:50 AM MT

Contemporary urban form, COVID-19, social disadvantage, and health outcomes, 3/24/2023, 8:30-AM-9:50 AM MT

Disease Surveillance: The Role of Geography in Forecasting the Future, 3/24/2023, 8:30 AM-9:50 AM MT

HMGS G Peter Gould Student Paper Competition, 3/24/2023, 8:30 AM-9:50 AM MT

Global Pandemics: Understanding the Present and Preparing for the Future, 3/24/2023, 10:20 AM-11:40 AM MT

- * Geospatial Approaches to Cancer Epidemiology 2: Access to Care, 3/24/2023, 10:20 AM-11:40 AM MT

- * HRDSG Hazards and Health 1: Public Health Risks, 3/24/2023, 12:50 PM-2:10 PM MT

Symposium on Geospatial Approaches to Pressing Grand Challenges: Global Pandemics, Climate Change, and Food Security: Toward a Better Urban Living Environment in the Era of Challenges, 3/24/2023, 12:50 PM-2:10 PM MT

- * HRDSG Hazards and Health 2: Vulnerable Populations, 3/24/2023, 2:40 PM-4:00 PM MT

- * *Using Spatial Analysis in Public Health and Epidemiology*, 3/24/2023, 2:40 PM-4:00 PM MT

Symposium on Geospatial Approaches to Pressing Grand Challenges: Global Pandemics, Climate Change, and Food Security: Vector-borne Diseases under Environmental Changes 1, 3/24/2023, 2:40 PM-4:00 PM MT

- * Ecology and Evolution of Infectious Diseases, 3/24/2023, 4:30 PM-5:50 PM MT

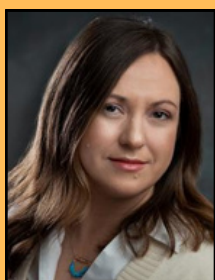
- * HRDSG Hazards and Health 3: COVID Risk and Vulnerability, 3/24/2023, 4:30 PM-5:50 PM MT

Symposium on Geospatial Approaches to Pressing Grand Challenges: Global Pandemics, Climate Change, and Food Security: Closing Plenary, 3/24/2023, 4:30 PM-5:50 PM MT

Symposium on Geospatial Approaches to Pressing Grand Challenges: Global Pandemics, Climate Change, and Food Security: Challenges and Innovations on Environmental Contexts and Human Mobility Research in the Global Pandemic, 3/24/2023, 6:00 PM-7:20 PM MT

Symposium on Geospatial Approaches to Pressing Grand Challenges: Global Pandemics, Climate Change, and Food Security: Understanding and Tackling the Environment and Health Issues Facing Our World, 3/24/2023, 6:00 PM-7:20 PM MT

Symposium on Geospatial Approaches to Pressing Grand Challenges: Global Pandemics, Climate Change, and Food Security: Understanding and Tackling the Environment and Health Issues Facing Our World II, 3/24/2023, 6:00 PM-7:20 PM MT



EMERGING SCHOLAR SESSION MARYNIA KOLAK

March 26, 2023
2:40 PM (MT)

Assistant Professor, Department of Geography & Geographic Information Science, University of Illinois Urbana-Champaign

Dr. Kolak's research centers on how "place" impacts health outcomes in different ways, for different people. She focuses on quantifying and distilling the structural determinants of health across different environments, tying political ecology models of public health with geocomputational methods and quasi-experimental policy evaluation techniques.



HMGSg SESSIONS AT 2023 AAG ANNUAL CONFERENCE

Featured Session | * Geospatial Health Research Symposium Session | *Virtual Session*

Saturday, March 25, 2023

Symposium on Geospatial Approaches to Pressing Grand Challenges: Global Pandemics, Climate Change, and Food Security: Emerging Trends in Community Food Environmental Research, 3/25/2023, 8:30 AM-9:50 AM MT

Symposium on Human Dynamics Research: Lessons Learned From the COVID-19 Pandemic - Evolving Geospatial Methods and Perspectives of Human Mobility and Urban Dynamics Research 1, 3/25/2023, 8:30 AM-9:50 AM MT

* Access to Health Care, 3/25/2023, 8:30 AM-9:50 AM MT

Symposium on Human Dynamics Research: Lessons Learned From the COVID-19 Pandemic - Evolving Geospatial Methods and Perspectives of Human Mobility and Urban Dynamics Research 2, 3/25/2023, 10:20 AM-11:40 AM MT

* Climate Change and Health: Climate Justice, 3/25/2023, 10:20 AM-11:40 AM MT

* HRDSG Pollution and Industrial Hazards 2, 3/25/2023, 10:20 AM-11:40 AM MT

Symposium on Geospatial Approaches to Pressing Grand Challenges: Global Pandemics, Climate Change, and Food Security: Vector-borne Diseases under Environmental Changes 2, 3/25/2023, 10:20 AM-11:40 AM MT

Health and Medical Geography Specialty Group Business Meeting, 3/25/2023, 11:45 AM-12:45 PM MT

* Spatial and Temporal Analysis on Human Population Dynamics and Social Vulnerability, 3/25/2023, 12:50 PM-2:10 PM MT

Symposium on Human Dynamics Research: Lessons Learned From the COVID-19 Pandemic - Evolving Geospatial Methods and Perspectives of Human Mobility and Urban Dynamics Research 3, 3/25/2023, 12:50 PM-2:10 PM MT

* HRDSG Pollution and Industrial Hazards 3, 3/25/2023, 12:50 PM-2:10 PM MT

* HRDSG Pollution and Industrial Hazards 4, 3/25/2023, 2:40 PM-4:00 PM MT

HMGSg: Undergraduate Mentoring Panel, 3/25/2023, 2:40 PM-4:00 PM MT

* Understanding the effects of COVID-19, 3/25/2023, 4:30 PM-5:50 PM MT

Symposium on Human Dynamics Research: Lessons Learned From the COVID-19 Pandemic - Evolving Geospatial Methods and Perspectives of Human Mobility and Urban Dynamics Research 4, 3/25/2023, 4:30 PM-5:50 PM MT

Sunday, March 26, 2023

#AAG23: Latinx Geographies of Environmental Justice, 3/26/2023, 8:30 AM-9:50 AM MT

Heat Resilient Communities 1: Measuring Heat, 3/26/2023, 8:30 AM-9:50 AM MT

UNDERGRADUATE STUDENT MENTORING PANEL

March 25, 2023
2:40 PM (MT)

Undergraduate students and recent graduates will answer questions about undergraduate student experiences and opportunities in health and medical geography. After the panel portion, we will have time for networking and one-on-one Q/A. If you have questions contact Dayani Davilla at dayanidavilla@my.unt.edu or Paul Delamater at pld@email.unc.edu.

Click here if you are interested in being a panellist

Click here to submit questions for the panelists



HMGS G SESSIONS AT 2023 AAG ANNUAL CONFERENCE

Featured Session | * Geospatial Health Research Symposium Session | *Virtual Session*

Sunday, March 26, 2023 (cont.)

Vulnerable Populations and Health Geographies,
3/26/2023, 10:20 AM-11:40 AM MT

Health and Medical Geography Specialty Group
Keynote Speaker, 3/26/2023, 10:20 AM-11:40 AM MT

* Advanced Methods and Metrics for Health Analysis,
3/26/2023, 12:50 PM-2:10 PM MT

HMGS G: Emerging Scholar in Health Geography,
3/26/2023, 2:40 PM-4:00 PM MT

* Analyzing Environmental Exposures, 3/26/2023, 2:40
PM-4:00 PM MT

Food Environment and Health, 3/26/2023, 2:40 PM-
4:00 PM MT

* Social Determinants of Health (SDOH) and Quality of
Life I, 3/26/2023, 2:40 PM-4:00 PM MT

* Spatiotemporal disease mapping and analysis,
3/26/2023, 2:40 PM-4:00 PM MT

Geospatial Big Data for Public Health, 3/26/2023, 4:30
PM-5:50 PM MT

* Health Disparities in the United States, 3/26/2023,
4:30 PM-5:50 PM MT

* Social Determinants of Health (SDOH) and Quality of
Life II, 3/26/2023, 4:30 PM-5:50 PM MT

Monday, March 27, 2023

* *Health Care Access and Utilization*, 3/27/2023, 8:30
AM-9:50 AM MT

* Analyzing COVID-19 Outcomes, 3/27/2023, 10:20 AM-
11:40 AM MT

(Im)migration, Inequities and COVID-19, 3/27/2023,
10:20 AM-11:40 AM MT

* Air Pollution and Health, 3/27/2023, 12:50 PM-2:10
PM MT

* Mapping in Public Health and Environmental Justice,
3/27/2023, 2:40 PM-4:00 PM MT

* COVID-19 Vaccination and Outcomes, 3/27/2023,
4:30 PM-5:50 PM MT

HMGS G SOCIAL EVENT
March 25, 2023
6:00 PM - 8:00 PM (MT)

Light appetizers will be provided

WOODS BOSS
BREWING COMPANY

2210 California Street
Denver, Colorado 80205
www.woodsbossbrewing.com



RECENT PUBLICATIONS BY HMGSG MEMBERS

Self Reported by our members

Bhattarai, S, Blackburn, JK, McKune, S, Ryan, SJ (2023). Spatio-temporal patterns of malaria in Nepal from 2005 to 2018: a country progressing towards malaria elimination. *Spatial and Spatiotemporal Epidemiology* 45(100576). <https://doi.org/10.1016/j.sste.2023.100576>

Bhattarai, S, Blackburn, JK, and Ryan, SJ (2022). Malaria transmission in Nepal under climate change: anticipated shifts in extent and season, and comparison with risk definitions for intervention. *Malaria Journal*. 21(390). <https://doi.org/10.1186/s12936-022-04417-x>

Caballero, MD, Gunda, T, and McDonald, YJ (2022). Pollution in the Press: Employing Text Analytics to Understand Regional Water Quality Narratives. *Frontiers in Environmental Science*. <https://www.frontiersin.org/articles/10.3389/fenvs.2022.770812/full>

Delamater, PL, & Woodul, RL (2022). NC-COVID: A Time-Varying Compartmental Model for Estimating SARS-CoV-2 Infection Dynamics in North Carolina, US. *MedRxiv*, 2022.10.21.22281271. <https://doi.org/10.1101/2022.10.21.22281271>

Delmelle, EM, Desjardins, MR, Jung, P, Owusu, C, Lan, Y, Hohl, A, & Dony, C (2022). Uncertainty in geospatial health: challenges and opportunities ahead. *Annals of Epidemiology*, 65:15-30. <https://doi.org/10.1016/j.annepidem.2021.10.002>

Desjardins, MR, Murray, ET, Baranyi, G, Hobbs, M, & Curtis, S (2023). Improving longitudinal research in geospatial health: An agenda. *Health & Place*, 80(102994). <https://doi.org/10.1016/j.healthplace.2023.102994>

Ding, KJ, Hornberger, GM, Hill, E, and McDonald, YJ (2022). Where You Drink Water: An Assessment of the Tennessee, USA Public Water Supply. *Water*. 14(16), 2562. <https://doi.org/10.3390/w14162562>

Dong, W, Bensken, WP, Kim, U, Rose, J, Fan, Q, Schiltz, NK, ... & Koroukian, SM (2022). Variation in and Factors Associated With US County-Level Cancer Mortality, 2008-2019. *JAMA Network Open*, 5(9):e2230925. <http://doi.org/10.1001/jamanetworkopen.2022.30925>

Dong, W, Kucmanic, M, Winter, J, Pronovost, P, Rose, J, Kim, U, ... & Hoehn, R (2023) Understanding Disparities in Receipt of Complex Gastrointestinal Cancer Surgery at a Small Geographic Scale. *Annals of Surgery*. <http://doi.org/10.1097/SLA.0000000000005828>

Hoffman-Hall, A, Gorris, ME, Anenberg, S, Bredder, AE, Dhaliwal, JK, Diaz, MA, Fortner, SK, McAdoo, BG, Reano, D, Rehr, RC, Roop, HA, Zaitchik BF (2022). A GeoHealth Call to Action: Moving Beyond Identifying Environmental Injustices to Co-Creating Solutions. *GeoHealth*, 6(11). <https://doi.org/10.1029/2022GH000706>

Kang JY, Farkhad BF, Chan MpS, Michels A, Albarracin D, et al. (2022). Spatial accessibility to HIV testing, treatment, and prevention services in Illinois and Chicago, USA. *PLOS ONE* 17(7): e0270404. <https://doi.org/10.1371/journal.pone.0270404>

Lippi, CA, Rund, SSC, and Ryan, SJ (2023). Characterizing the Vector Data Ecosystem. *Journal of Medical Entomology*. 60(2):247-254. <https://doi.org/10.1093/jme/tjad009>

McDonald, YJ (2023). Uneven benefits infrastructure spending among ethnoracial groups. *Nature Water*, 1:24-25. <https://doi.org/10.1038/s44221-022-00019-8>.

Michels, A, Kang, J-Y and Wang, S (2022). Particle Swarm Optimization for Calibration in Spatially Explicit Agent-Based Modeling. *Journal of Artificial Societies and Social Simulation* 25(2):8. <https://doi.org/10.18564/jasss.4796>

Mitchell, P, Samsel, S, Curtin, K, Price, A, Turner, D, Tramp, R, Hudnall, M, Parton, J, Lewis, D (2022). Geographic Disparities in Access to Medication for Opioid Use Disorder across US Census Tracts based on Treatment Utilization Behavior, *Social Science and Medicine*, 302(114992). <https://doi.org/10.1016/j.socscimed.2022.114992>

RECENT PUBLICATIONS BY HMGSG MEMBERS (CONT.)

Pang, C, & Delamater, PL (2023). Spatiotemporal Characteristics of the SARS-CoV-2 Delta Wave in North Carolina. *Spatial and Spatio-Temporal Epidemiology*, 45(100566). <https://doi.org/10.1016/j.sste.2023.100566>

Sugg, MM, Runkle, JD, Andersen, LM, & Desjardins, MR (2023). Exploring place-based differences in suicide and suicide-related outcomes among North Carolina adolescents and young adults. *Journal of Adolescent Health*, 72(1):27-35. <https://doi.org/10.1016/j.jadohealth.2022.06.013>

Rockett IRH, Jia H, Ali B, et al. (2022). Association of State Social and Environmental Factors With Rates of Self-injury Mortality and Suicide in the United States. *JAMA Netw Open*. 5(2):e2146591. <https://doi.org/10.1001/jamanetworkopen.2021.46591>

Rockett, IR, Ali, B, Caine, ED et al. (2023). Escalating costs of self-injury mortality in the 21st century United States: an interstate observational study. *BMC Public Health* 23(285). <https://doi.org/10.1186/s12889-023-15188-8>

RECENT GRANTS BY HMGSG MEMBERS

Self Reported by our members

Creating a novel place-based measure to explain racial disparities in naloxone access to reduce opioid overdose deaths, R01, National Institute on Minority Health and Health Disparities, 2022-2026, PI: Carpenter, DM, co-I: Delamater, PL

Using Spatiotemporal Analysis to Define and Analyze SKCCC's Catchment Area(s) to Improve Cancer Care Accessibility, Preventative Screening, and Disease Outcomes, 2022-2023, Maryland Department of Health and Mental Hygiene (Cigarette Restitution Fund Program), PI: Desjardins, MR

Neighborhood Walkability and Lifestyle Activity: Examining Promising Pathways to Improve Cognitive Health in Baltimore City Older Adults, 2023-2024, CHARMED Pilot Project grant: NIEHS, Co-PI: Desjardins, MR

Residential Mobility: Implications for the Accuracy of Disease Cluster Detection, 2023-2025, NSF Behavioral and Cognitive Sciences (BCS), Co-PI: Desjardins, MR

Multilevel drivers of cancer disparities impacting African Americans, 2023-2026, American Cancer Society, \$792,000, PIs: Knott, C (UMD); Ghosh, D (UConn)

Consent-based Siting of Nuclear Waste. Sandia National Laboratories (SNL), 2022-2023, Department of Energy (prime). SNL PI: Gunda, T, VU PI: McDonald, YJ

Tennessee Community Water Systems Estimated Service Area Boundary Project, 2022-2023, Tennessee Department of Environment & Conservation. VU PI: McDonald, YJ

Leveraging Bloom's Taxonomy and Geographic Information Science to Assess Drinking Water Justice in the United States, 2022-2023, Peabody Small Grants 2021-2022 Instructional Innovation and Improvement Grant. VU PI: McDonald, YJ

Predicting Emergence in Multidisciplinary Pandemic Tipping-points (PREEMPT), 2022-2024, NSF PIPP Phase I, \$999,800, PI: Fefferman, Co-PI: Ryan, SJ

Predicting the global host-virus network from molecular foundations, 2022-2027, NSF Bioinformatics Institute (BII), \$12,500,000, PI: Carlson, Co-PI: Ryan, SJ

Southeast Regional Center of Excellence in Vector Borne Disease: The Gateway Program, 2022-2027, CDC Vector-Borne Disease Regional Centers of Excellence (U01), \$10,000,000, PI: Dinglasan, R, Informatics Core Co-I: Ryan, SJ



RECENT GRANTS BY HMGS G MEMBERS (CONT.)

Climate Change Impacts on Maternal Health in a Southern Birth Cohort: A Causal Analysis, 2022-2024, National Institute of Environmental Health Sciences, \$152,478, PI(s); Runkle J and Sugg M

A Causal Analysis of the Complex Mental Health Impacts of the Climate Crisis in Young People, 2021-2024, National Institute of Environmental Health Sciences, \$413,597, Runkle J and Sugg M

CAREER: The Geography of Mental Health: Understanding contextual, compositional, and external stressors, 2021-2025, National Science Foundation, Human-Environmental and Geographical Sciences (HEGS), \$413,769, PI: Sugg M

Evaluating a heat-health action plan in rural Mexico to manage effects of heat, 2023-2028, Wellcome Trust Heat Adaptation (2,000,000 GBP), Co-Applicant: Uejio, C

Harnessing ECOSTRESS to assess urban heat risks in human and avian communities, 2023-2026, NASA ECOSTRESS Science Team (\$450,000), co-PI: Uejio, C

Prescribed Fire, Risk Management, Health, and Equity, 2022-2024, NASA Applied Sciences, Earth Sciences Division (\$250,000), PI: Uejio, C

RECENT AWARDS BY HMGS G MEMBERS

Self Reported by our members

Michael Desjardins, 2023 AAG Research Grant: "Evaluating the Impact of Geographic Accessibility on Gynecologic Cancer Outcomes in the United States"

Penelope Mitchell, 2022 Chairperson's Award, University of Alabama, Department of Geography

Penelope Mitchell, 2022 National Alumni Association Fellowship Award, University of Alabama, Graduate School

Sadie Ryan, 2022 Evan Coe Award for Excellence in Medical Geography, University of Florida

OTHER NEWS FROM HMGS G MEMBERS

Self Reported by our members

Weichuan Dong reports that their paper titled, "Geographic Variation and Risk Factor Association of Early Versus Late Onset Colorectal Cancer," was selected as the cover of an issue of [Cancers](#).

Sadie Ryan reports that advisee Shreejana Bhattarai successfully defended her dissertation (University of Florida, Department of Geography) in February 2023, "Evaluating the Progress of Malaria Control and Effectiveness of Vector Control Interventions for Eliminating Malaria from Nepal" from which she has 2 papers published and one accepted.

Tolulope Osayomi reports that they are the lead guest editor of a special issue on [Geospatial Responses to COVID-19 in Africa in the Journal of Geovisualisation and Spatial Analysis](#)

Michael Desjardins reports a call for book chapters for Spatial Analysis of Longitudinal Health Data (Springer), co-edited by Desjardins, M.R., and Delmelle, E.M. Those interested in submitting should contact mdesjar3@jhu.edu for more details.