



AAG

AMERICAN ASSOCIATION
of GEOGRAPHERS

Spring 2022 Newsletter

Health & Medical Geography Specialty

Letter from the Chair

Dear members of the Health and Medical Geography Specialty Group,

I will start this letter by stating how honored I am to have served as chair of such a wonderful (and critical) specialty group. I joined the board as webmaster during my master's in 2016 and dreamed of someday leading HMGSG with the encouragement of my PhD advisor, Dr. Eric Delmelle. I'd like to thank our members for putting your trust in me so early on in my academic career. I'd also like to thank last year's chair, Dr. Kevin Matthews, for his leadership, vision, and greatly facilitating my transition. Finally, I'd like to thank our current and past board members for their hard work and dedication to HMGSG during these unprecedented years with the COVID-19 pandemic, political unrest, racial injustices, climate and environmental issues; which have made our day-to-day lives as educators, researchers, and humans very challenging and uncertain. Our roles as geographers have never been more important, no matter what area(s) we study. It is my hope that the notion of spatial thinking (including the nexus between health and place) will find its way in the curriculum in primary, secondary, and higher education. Geography is so much more than places on a map and I hope for a future where the majority of people think spatially and spatiotemporally.

One of my goals as chair is improving visibility of our specialty group, AAG, and geography, in general. It has been nice to see the success of adding a new undergraduate board position (Dayani Davilla), public seminar series, and upcoming mentoring opportunities at the virtual AAG conference. We still have work to do, but I hope myself and the board have been a positive catalyst for continued improvement and management of our large and impactful specialty group. I have the utmost respect and faith in our next chair, Dr. Paul Delamater, who will probably do a better job than I did! Furthermore, we have 6 available board positions up for grabs (2 at-large, 2 student, 1 vice-chair, and 1 webmaster). Please consider nominating someone or yourself! Details have been disseminated via email and on our social media platforms.

As we prepare for yet another virtual AAG, I am excited to announce that HMGSG is sponsoring 34 sessions, including 28 organized sessions part of our annual Geospatial Health Research Symposium. For the first time, AAG is sponsoring an HMGSG Keynote address, where we will hear from Dr. Sara McLafferty (University of Illinois at Urbana-Champaign). We are excited to honor her very impactful and inspiring career! I would also like to highlight two other keynote sessions: Dr. Sarah Curtis in the Melinda S. Meade Distinguished Scholarship Award session; and Drs. Trang VoPham and Marta Jankowska in the Emerging Scholar (s) Award session. Finally, please do your best to attend our annual HMGSG Business Meeting on 2/28/22 at 12:50pm EST.

Before I wrap up, I would like to emphasize the importance of mental health support. The pandemic has seen vast increases in anxiety disorders and depression. Please take extra care of yourself and support your family, friends, students, and colleagues. Personally, I would not have made it this far without the care of my mental health providers. Furthermore, I highly recommend checking out the free resources in your area provided by the National Alliance on Mental Illness (NAMI) - <https://www.nami.org/findsupport>. I would also like to invite you to check out my good friend's new lifestyle brand (<https://whatwebloom.com/>) where they donate 10% of all profits to mental health organizations; raising awareness, providing community support, and aiding those in need.

It has been a great pleasure to serve HMGSG and hope to see many of you on Zoom during AAG and at future conferences, virtually or in person.

Sincerely,

-Michael R. Desjardins, PhD

Follow us on:



HMGS Current Officers

Chair: Michael Desjardins (2021—2022) Johns Hopkins Bloomberg School of Public Health
Vice-Chair: Paul Delamater (2021-2022) UNC Chapel Hill
At-Large member: Sadie Ryan (2021-2023) University of Florida
At-Large member: Arrianna Planey (2021-2023) UNC Chapel Hill
At-Large member: Kyle T. Evered (2020-2022) Michigan State University
At-Large member: Yanjia Cao (2020-2022) University of California, San Diego
Graduate Student member: Shamayeta Bhattacharya (2020-2022) University of Connecticut
Graduate Student member: Fikriyah Winata (2020-2022) University of Illinois at Urbana-Champaign
Undergraduate representative: Dayani Davilla(2021-2023): University of North Texas
Webmaster: Yu Lan (continuous) UNC-Charlotte

Geospatial Health Research Symposium & HMGS Sponsored Sessions

Geospatial Health Symposium #3: The advantages and challenges of using big data in environmental exposure research, 2/25/2022, 8:00 AM EST

Geospatial Health Symposium #1: Healthcare Accessibility and Utilization, 2/25/2022, 9:40 AM EST

Geospatial Health Symposium #2: Advances in Computational Approaches for Geospatial Health Applications - Epidemiology, 2/25/2022, 11:20 AM EST

Geospatial Health Symposium #16: Geographies of Environment and Health: Big data for environment and health I, 2/25/2022, 2:00 PM EST

Urban Food Environment and Health, 2/25/2022, 2:00 PM EST

Geospatial Health Symposium #17: Geographies of Environment and Health: Big data for environment and health I, 2/25/2022, 3:40 PM EST

Urban Food Environments and Health 2, 2/25/2022, 3:40 PM EST

Geospatial Health Symposium #18: Geographies of Environment and Health: Big data for environment and health I, 2/25/2022, 5:20 PM EST

Geospatial Health Symposium 4: Chronic Disease and Human Behavior, 2/26/2022, 8:00 AM EST

Symposium on Human Dynamics Research & Geospatial Health Symposium #11: Human Mobility and Urban Dynamics in the COVID-19 Pandemic Era 1, 2/26/2022, 8:00 AM EST

Geospatial Health Symposium #23: Clinical geography: A proposal to embrace space, place and well-being through person-centered practice, 2/26/22, 8:00 AM EST

Geospatial Health Symposium #5: Environmental Exposure and Health Outcomes, 2/26/22, 9:40 AM EST

Symposium on Human Dynamics Research & Geospatial Health Symposium #12: Human Mobility and Urban Dynamics in the COVID-19 Pandemic Era 2, 2/26/2022, 9:40 AM EST

Symposium on Human Dynamics Research & Geospatial Health Symposium #13: Human Mobility and Urban Dynamics in the COVID-19 Pandemic Era 3, 2/26/2022, 11:20 AM EST

Geospatial Health Symposium #26: Melinda S. Meade Distinguished Scholarship Award in Health and Medical Geography, 2/26/2022, 11:20 AM EST

Geospatial Health Symposium #6: COVID-19 and Health Care, 2/26/2022, 3:40 PM EST

Geospatial Health Symposium #28: Peter Gould Student Award Competition, 2/26/2022, 3:40 PM EST

Geospatial Health Symposium #7: Spatial Analysis of COVID-19, 2/26/2022, 5:20 PM EST

Public health challenges of migration, asylum-seeking, and border-crossing, 2/27/22, 8:00 AM EST

Geospatial Health Symposium #25: Emerging Scholar Award in Health and Medical Geography, 2/27/2022, 9:40 AM EST

Geospatial Health Research Symposium & HMGSG Sponsored Sessions

(Continued)

Geospatial Health Symposium #3: The advantages and challenges of using big data in environmental exposure research, 2/25/2022, 8:00 AM EST

Geospatial Health Symposium #1: Healthcare Accessibility and Utilization, 2/25/2022, 9:40 AM EST

Geospatial Health Symposium #2: Advances in Computational Approaches for Geospatial Health Applications - Epidemiology, 2/25/2022, 11:20 AM EST

Geospatial Health Symposium #16: Geographies of Environment and Health: Big data for environment and health I, 2/25/2022, 2:00 PM EST

Urban Food Environment and Health, 2/25/2022, 2:00 PM EST

Geospatial Health Symposium #17: Geographies of Environment and Health: Big data for environment and health I, 2/25/2022, 3:40 PM EST

Urban Food Environments and Health 2, 2/25/2022, 3:40 PM EST

Geospatial Health Symposium #18: Geographies of Environment and Health: Big data for environment and health I, 2/25/2022, 5:20 PM EST

Geospatial Health Symposium 4: Chronic Disease and Human Behavior, 2/26/2022, 8:00 AM EST

Symposium on Human Dynamics Research & Geospatial Health Symposium #11: Human Mobility and Urban Dynamics in the COVID-19 Pandemic Era 1, 2/26/2022, 8:00 AM EST

Geospatial Health Symposium #23: Clinical geography: A proposal to embrace space, place and well-being through person-centered practice, 2/26/22, 8:00 AM EST

Geospatial Health Symposium #5: Environmental Exposure and Health Outcomes, 2/26/22, 9:40 AM ET

Symposium on Human Dynamics Research & Geospatial Health Symposium #12: Human Mobility and Urban Dynamics in the COVID-19 Pandemic Era 2, 2/26/2022, 9:40 AM EST

Symposium on Human Dynamics Research & Geospatial Health Symposium #13: Human Mobility and Urban Dynamics in the COVID-19 Pandemic Era 3, 2/26/2022, 11:20 AM EST

Geospatial Health Symposium #26: Melinda S. Meade Distinguished Scholarship Award in Health and Medical Geography, 2/26/2022, 11:20 AM EST

Geospatial Health Symposium #6: COVID-19 and Health Care, 2/26/2022, 3:40 PM EST

Geospatial Health Symposium #28: Peter Gould Student Award Competition, 2/26/2022, 3:40 PM EST

Geospatial Health Symposium #7: Spatial Analysis of COVID-19, 2/26/2022, 5:20 PM EST

Public health challenges of migration, asylum-seeking, and border-crossing, 2/27/22, 8:00 AM EST

Geospatial Health Symposium #25: Emerging Scholar Award in Health and Medical Geography, 2/27/2022, 9:40 AM EST

Geospatial Health Symposium #27: Health and Medical Geography Specialty Group (HMGSG) Keynote Address, 2/27/2022, 11:20 AM EST

Geospatial Health Symposium #9: Access and Utilization of Health Care Services, 2/27/2022, 2:00 PM EST

Geospatial Health Symposium #10: Access and Utilization of Health Care Services 2, 2/27/2022, 3:40 PM EST

Geospatial Health Symposium #22: Gender Inequality and Empowerment in Global Perspective, 2/27/2022, 5:20 PM EST

Geospatial Health Symposium #22: Gender Inequality and Empowerment in Global Perspective, 2/27/2022, 5:20 PM EST

Geospatial Health Symposium #21: Local Geographies of Health Disparity 2: Mobility & Accessibility, 2/28/2022, 8:00 AM EST

Geospatial Health Research Symposium & HMGSG Sponsored Sessions

(Continued)

Spatiotemporal disease mapping and analysis (I), 2/28/2022, 8:00 AM EST

Spatiotemporal disease mapping and analysis (II), 2/28/2022, 9:40 AM EST

Health and Medical Geography Specialty Group Business Meeting, 2/28/2022, 12:50 PM EST

Geospatial Health Symposium #20: Local Geographies of Health Disparity 1: Power & Context, 2/28/2022, 2:00 PM EST

Geospatial Health Symposium #19: The health impacts of climate change and society's response to climate change: a call for climate justice, 2/28/2022, 5:20 PM EST

Geospatial Health Symposium #24: Advances in Dynamic Environmental Exposure, Mobility Patterns, and Health Outcomes, 3/1/2022, 8:00 AM EST

Interlocking Oppressions and COVID: 1, 3/1/2022, 8:00 AM EST

Geospatial Health Research Symposium #14: Geography, Substance Use and Addiction 1, 3/1/2022, 9:40 AM EST

Geospatial Health Research Symposium #15: Geography, Substance Use and Addiction 2, 3/1/2022, 11:20 AM EST

Geospatial Technologies and Health, 3/1/2022, 3:40 PM EST

Geospatial Health Symposium #8: Applications, Innovations, and Challenges to Explore Human Mobility and Environmental Contexts, 3/1/2022, 5:20 PM EST

~~~ Sessions end ~~~~

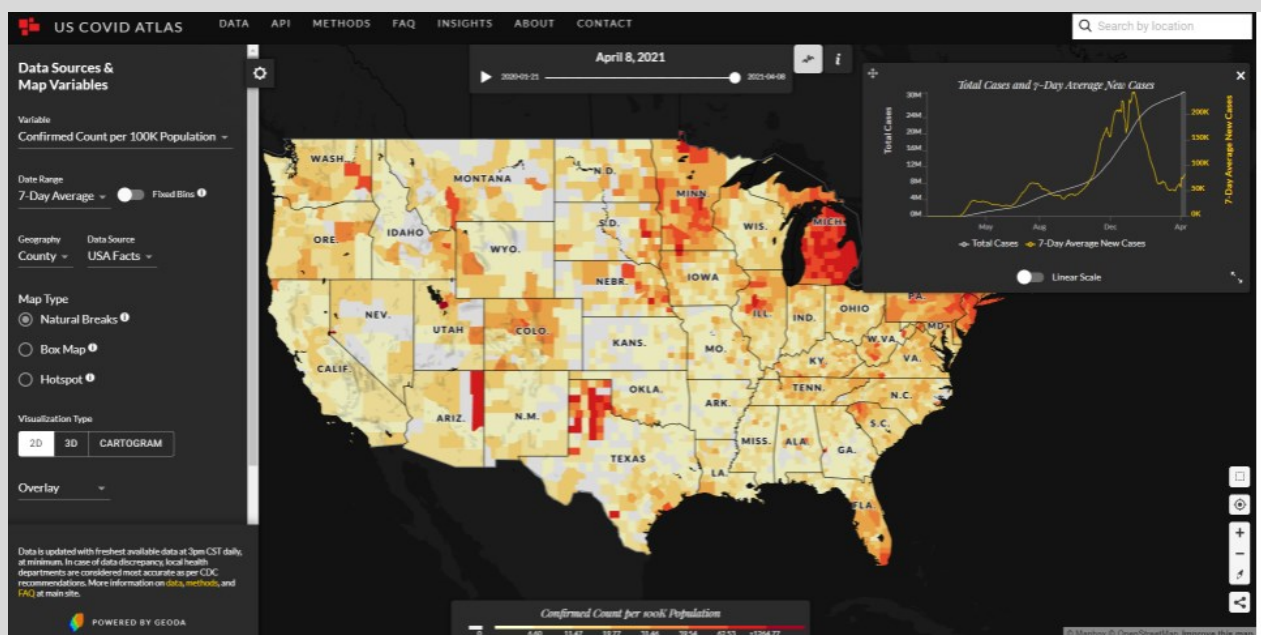
## 2021 HMGSG Award Winners

### Melinda S. Meade Distinguished Scholarship Award in Health and Medical Geography

Sarah Curtis – 2021 (Universities of Edinburgh & Durham)

### Health Data Visualization Award

**Interactive mapping group** (Team: Dylan Halpern, Marynia Kolak, Qinyun Lin, Vidal Anguino, Susan Paykin, Xun Li — University of Chicago)



Website: <https://theuscovdatlas.org>

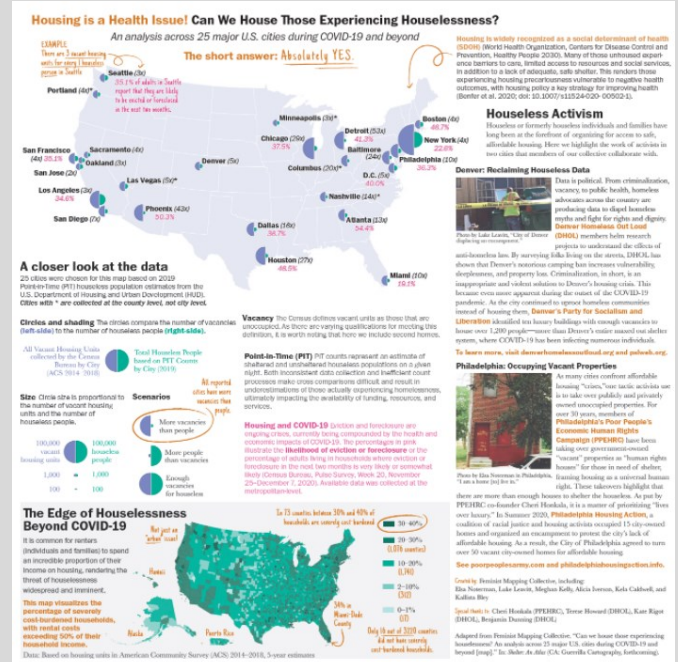
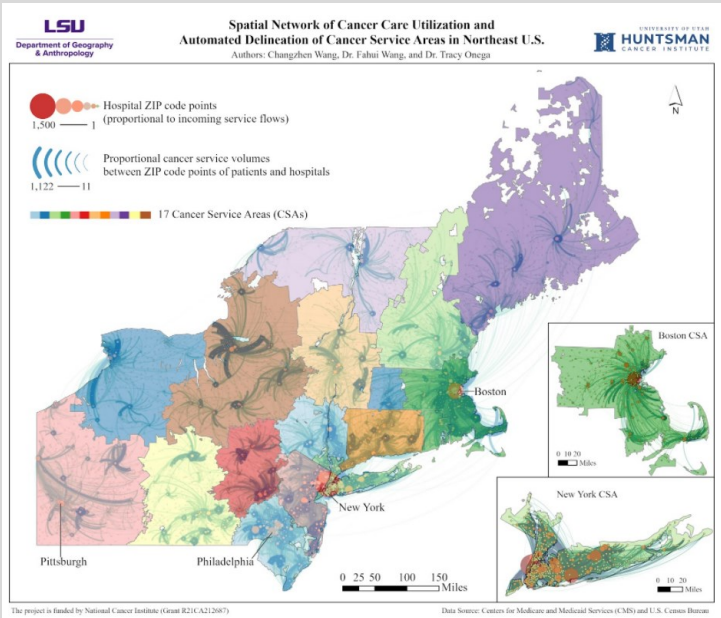
# 2021 HMGSG Award Winners

## (Continued) Health Data Visualization Contest

### Static mapping

**Winner:** Changzhen Wang, Fahui Wang, and Tracy Onega — Louisiana State University (*on the left*)

**Honorable Mention :** Team: Feminist Mapping Collective: Elsa Noterman, Luke Leavitt, Meghan Kelly, Alicia Iverson, Kela Caldwell, Kallista Bley (*on the right*)



## Emerging Scholar Award in Health and Medical Geography

Marta M Jankowska (City of Hope Comprehensive Cancer Center)

Trang VoPham (Fred Hutchinson Cancer Research Center)

## Jacques May Thesis Prize

Ph.D. level: Makoto Takahashi (Munich Centre for Technology in Society)

Meredith Alberta Palmer (Cornell University)

Master's level: Siewying Shee (National University of Singapore)

## Peter Gould Student Paper Award

Yanzhe Yin (University of Georgia)

## Melinda S. Meade Travel Awards

Yu Lan (UNC-Charlotte)

Zhiyue (Luna) Xia (University of Maryland)

# Awards & Grants\*

## Michael R. Desjardins (Johns Hopkins Bloomberg School of Public Health)

- Using Spatial Analytics to Define and Characterize Patient Catchment Area(s) for the Sidney Kimmel Comprehensive Cancer
- Testing the impact of smartphone-based messaging to support young adult smoking cessation

## Awards & Grants\*

### **Colleen Reid** (University of Colorado Boulder )

- Provost's Faculty Achievement Award Winner, University of Colorado Boulder
- EPA STAR grant, as PI, for a three-year study titled: "Informing school decision-making during wildfire events: evaluation of indoor PM2.5 exposures and associated health impacts in children"

### **Mark R Welford** (University of Northern Iowa)

- NSF Grant, \$199,998. RAPID: Tracking and Understanding Spatiotemporal Dynamics of the COVID-19 Pandemic in the Arctic (COVITA). PI Petrov, Co-PIs Degani, DeGroot and Welford. Funded June 11, 2020 for 1 year.
- NSF Grant, \$186,089. RAPID: Tracking and Understanding Spatiotemporal Dynamics of the COVID-19 Pandemic in the Arctic (COVITA). PI Petrov, Co-PIs Degani, DeGroot and Welford. One year supplement funded June 10, 2021 for a year.

### **Jessica Finlay** (University of Michigan)

- NIH K99/R00 "Aging in Place Before and After the COVID-19 Pandemic Onset: A Study of Neighborhoods and Cognitive Health Among Older Americans"

### **Tolulope Osayomi** (University of Ibadan)

- 2021 Nigerian Cartographic Association Prize for Best Paper Presentation and 2021 Emerging and New Researchers in Geography of Health and Impairment (ENGHRI) Prize for Best Paper Presentation
- Michigan Alzheimer's Disease Research Center Early Career Investigator Mentorship Program

### **Yi-Chen Wang** (National University of Singapore)

- Assessing Spatiotemporal Vulnerability, Risk Perceptions of and Behaviors toward Infectious Diseases in Singapore, funded by Ministry of Education, Singapore

### **Yolanda Jane McDonald** (Vanderbilt University)

- National Environmental Health Association, Centers for Disease Control and Prevention (prime), CDC-RFA-EH15-1507 "Private Wells Project." PI: Mary-Margaret Fill, Tennessee Department of Health. Role: Collaborative Partner: McDonald, Y.J
- National Center for Environmental Health, Centers for Disease Control (prime), CDC-RFA-EJ20-2025 "Strengthening environmental health capacity (EHC) to detect, prevent, and control environmental health hazards through data-driven, evidence-based approaches." PI: Mary-Margaret Fill, Tennessee Department of Health. Role: Collaborative Partner: McDonald, Y.J.

\*Awards and grants are self-reported by HMGSG members

## Recent Publications by HMGSG Members \*

- Beljaars, D (2022) *Compulsive Body Spaces*, Routledge
- Bhattacharya, S., "Becoming an Ally and Understanding the Geographies of Gender Identity: Lessons from Fieldwork." *The Geographical Bulletin* 62(2)
- Cao, Y., Karthikeyan, A., Krishna, S., Raju, R., Sindh, C., Srinivasan, M., Ramanujam, K., Mohan, V., Kang, G., John, J., Andrews, J., Lo, N. (2021) Geospatial pattern of typhoid fever in India: a model-based estimate of cohort and surveillance data. *Journal of Infectious Diseases* 224 (Sppl\_5), S475-S483. doi:10.1093/infdis/jiab187
- Chen, X., Johnson, E., Kulkarni, A., Ding, C., Ranelli, N., Chen, Y., & Xu, R. (2021). An Exploratory Approach to Deriving Nutrition Information of Restaurant Food from Crowdsourced Food Images: Case of Hartford. *Nutrients*, 13(11), 4132.
- Chen, X., & Wang, H. (2021). On the rise of the new B. 1.1. 529 variant: Five dimensions of access to a COVID-19 vaccine. *Vaccine*.
- Chen, X., Zhang, A., Wang, H., Gallaher, A., & Zhu, X. (2021). Compliance and containment in social distancing: mathematical modeling of COVID-19 across townships. *International Journal of Geographical Information Science*, 35(3), 446-465.

## Recent Publications by HMGSG Members \*

- Delmelle, E., Desjardins, M. R., Jung, P., Owusu, C., Lan, Y., Hohl, A., & Dony, C. (2021). Uncertainty in Geospatial Health: Challenges and Opportunities Ahead. *Annals of epidemiology*, 65: 15-30.
- Finlay, J., Esposito, M., Li, M., Zhou, H., Judd, S., & Clarke, P. 2021. Active Aging Infrastructure and Cognitive Health: A Mixed-Methods Study of Aging Americans. *Preventive Medicine*. <https://doi.org/10.1016/j.ypmed.2021.106669>
- Finlay, J. & Rowles, G. 2021. Clinical Geography: A Proposal to Embrace Space, Place and Wellbeing through Person-Centered Practice. *Wellbeing, Space & Society*. <https://doi.org/10.1016/j.wss.2021.100035>
- Finlay, J., Esposito, M., Li, M., Kobayashi, L., Khan, A., Gomez-Lopez, I., Melendez, R., Colabianchi, N., Judd, S., & Clarke, P. 2021. Can Neighborhood Social Infrastructure Modify Cognitive Function? A Mixed-Methods Study of Urban-Dwelling Aging Americans. *Journal of Aging and Health*. <https://doi.org/10.1177/08982643211008673>
- Franch-Pardo, I., Desjardins, M.R., Barea-Navarro, I., and Cerdà, A. 2021. A review of GIS methodologies to analyze the dynamics of COVID-19 in the second half 2020. *Transactions in GIS*, 25:2191-2239.
- Güemes, A., Ray, S., Aboumerhi, K., Desjardins, M. R.\*, Kvit, A., Corrigan, A. E., ... & Etienne-Cummings, R. (2021). A syndromic surveillance tool to detect anomalous clusters of COVID-19 symptoms in the United States. *Scientific Reports*, 11(1), 1-11. (\*Equal first-author contribution).
- Gutiérrez-Avila I, Arfer KB, Wong S, Rush J, Kloog I, Just AC. A spatiotemporal reconstruction of daily ambient temperature using satellite data in the Megalopolis of Central Mexico from 2003 to 2019. *Int J Climatol*. 2021;41(8):4095-4111. doi:10.1002/joc.7060
- Hines E, Reid CE. 2021. Hospital Preparedness, Mitigation, and Response to Hurricane Harvey in Harris County, Texas. *Disaster Medicine and Public Health Preparedness*. 1-7; doi:10.1017/dmp.2021.146
- Kondo MC, Reid CE, Mockrin MH, Heilman WE. 2021. Social and Health Vulnerability in Prescribed-Burn Exposed versus Unexposed Counties near the National Forest System. *Science of the Total Environment*. 150564. <https://doi.org/10.1016/j.scitotenv.2021.150564>
- Lawal, O., & Osayomi, T. (2021). Place-based modelling of social vulnerability to COVID-19 in Nigeria. *SN Social Sciences*, 1(11), 1-20.
- Lee, J., & Ramírez, I.J. 2022. Geography of disparity: connecting COVID-19 vulnerability and social determinants of health in Colorado. *Behavioral Medicine*. (in press)
- Leong, C.H., Chin, B.W.C., Feng, C.-C. and Wang, Y.-C. (2021). A socio-ecological perspective on COVID-19 spatiotemporal integrated vulnerability in Singapore. In: Shaw, S.L., Sui, D. (eds) *Mapping COVID-19 in Space and Time, Human Dynamics in Smart Cities*. Springer, Cham.
- Lett, E., & Everhart, A. (2022). Considerations for transgender population health research based on US national surveys, *Annals of Epidemiology*, <https://doi.org/10.1016/j.annepidem.2021.10.009>
- McDonald, Y.J., Anderson, K.M., Caballero, M.D., Ding, K.J., Fisher, D., Morkel, C., and Hill, E. (2022). A systematic review of geospatial representation of United States drinking community water system service areas. *AWWA Water Science*, <https://doi.org/10.1002/aws2.1266>.
- Nelson, S.E. & Rosenberg, M.W. (2021). Age-Friendly Cities and Older Indigenous People: An Exploratory Study in Prince George, Canada. *The Canadian Journal on Aging*, 41(2).
- Nelson, S. & Wilson, K. (2021). Rights and Health versus Rights to Health: Bringing Indigenous Peoples' Legal Rights into the Spaces of Health Care Services. *Political Geography*, 85. <https://doi.org/10.1016/j.polgeo.2020.102311>
- Okafor, S. I., & Osayomi, T. (2021). Geographical Dynamics of COVID-19 in Nigeria. *Coronavirus (COVID-19) Outbreaks, environment and human behaviour: International Case Studies*, 327
- Osayomi, T., Adeleke, R., Akpoterai, L. E., Fatayo, O. C., Ayanda, J. T., Moyin-Jesu, J., ... & Popoola, A. A. (2021). A Geographical Analysis of the African COVID-19 Paradox: Putting the Poverty-as-a-Vaccine Hypothesis to the Test. *Earth Systems and Environment*, 1-12.
- Paxton, C., Anderson, K.M., and McDonald, Y.J. on behalf of the Vanderbilt University Drinking Water Justice Lab (Spring 2021) The Tennessee Public Water Operator Survey. *Tennessee Utility News; Technology Issue* (35), 36-39.
- Petrov, A, Welford, MR, Degai, T, DeGroot, J, Savelyev, A, 2020. Spatiotemporal Dynamics of the COVID-19 Pandemic in the Arctic: Early Data and Emerging Trends. *International Journal of Circumpolar Health* 79, Issue 1.
- Petrov, A, Welford, MR, Golosov, N, DeGroot, J, Devlin, M, Degai, T, Savelyev, A, 2021. The 'Second Wave' of the COVID-19 Pandemic in the Arctic: Regional and Temporal Dynamics. *International Journal of Circumpolar Health*. doi:10.1080/22423982.2021.1925446.

## Recent Publications by HMGSG Members \*

- Clair A Kronk, Avery R Everhart, Florence Ashley, Hale M Thompson, Theodore E Schall, Teddy G Goetz, Laurel Hiatt, Zackary Derrick, Roz Queen, A Ram, E Mae Guthman, Olivia M Danforth, Elle Lett, Emery Potter, Simón(e) D Sun, Zack Marshall, Ryan Karnoski, Transgender data collection in the electronic health record: Current concepts and issues, *Journal of the American Medical Informatics Association*, Volume 29, Issue 2, February 2022, Pages 271–284, <https://doi.org/10.1093/jamia/>
- Delmelle, E., Desjardins, M. R., Jung, P., Owusu, C., Lan, Y., Hohl, A., & Dony, C. (2021). Uncertainty in Geospatial Health: Challenges and Opportunities Ahead. *Annals of epidemiology*. 65: 15-30.
- Everhart, Avery R., et al. “I’m Not Interested in Research; i’m Interested in Services”: How to Better Health and Social Services for Transgender Women Living with and Affected by HIV.” *Social Science & Medicine*, vol. 292, Pergamon, Jan. 2022, p. 114610, doi:10.1016/J.SOCSCIMED.2021.114610.
- Finlay, J., Esposito, M., Li, M., Zhou, H., Judd, S., & Clarke, P. 2021. Active Aging Infrastructure and Cognitive Health: A Mixed-Methods Study of Aging Americans. *Preventive Medicine*. <https://doi.org/10.1016/j.ypmed.2021.106669>
- Finlay, J. & Rowles, G. 2021. Clinical Geography: A Proposal to Embrace Space, Place and Wellbeing through Person-Centered Practice. *Wellbeing, Space & Society*. <https://doi.org/10.1016/j.wss.2021.100035>
- Finlay, J., Esposito, M., Li, M., Kobayashi, L., Khan, A., Gomez-Lopez, I., Melendez, R., Colabianchi, N., Judd, S., & Clarke, P. 2021. Can Neighborhood Social Infrastructure Modify Cognitive Function? A Mixed-Methods Study of Urban-Dwelling Aging Americans. *Journal of Aging and Health*. <https://doi.org/10.1177/08982643211008673>
- Franch-Pardo, I., Desjardins, M.R., Barea-Navarro, I., and Cerdà, A. 2021. A review of GIS methodologies to analyze the dynamics of COVID-19 in the second half 2020. *Transactions in GIS*, 25:2191-2239.
- Güemes, A., Ray, S., Aboumerhi, K., Desjardins, M. R.\*, Kvit, A., Corrigan, A. E., ... & Etienne-Cummings, R. (2021). A syndromic surveillance tool to detect anomalous clusters of COVID-19 symptoms in the United States. *Scientific Reports*, 11(1), 1-11. (\*Equal first-author contribution).
- Gutiérrez-Avila I, Arfer KB, Wong S, Rush J, Kloog I, Just AC. A spatiotemporal reconstruction of daily ambient temperature using satellite data in the Megalopolis of Central Mexico from 2003 to 2019. *Int J Climatol*. 2021;41(8):4095-4111. doi:10.1002/joc.7060
- Hines E, Reid CE. 2021. Hospital Preparedness, Mitigation, and Response to Hurricane Harvey in Harris County, Texas. *Disaster Medicine and Public Health Preparedness*. 1-7; doi:10.1017/dmp.2021.146
- Kondo MC, Reid CE, Mockrin MH, Heilman WE. 2021. Social and Health Vulnerability in Prescribed-Burn Exposed versus Unexposed Counties near the National Forest System. *Science of the Total Environment*. 150564. <https://doi.org/10.1016/j.scitotenv.2021.150564>
- Lawal, O., & Osayomi, T. (2021). Place-based modelling of social vulnerability to COVID-19 in Nigeria. *SN Social Sciences*, 1(11), 1-20.
- Lee, J., & Ramírez, I.J. 2022. Geography of disparity: connecting COVID-19 vulnerability and social determinants of health in Colorado. *Behavioral Medicine*. (in press)
- Leong, C.H., Chin, B.W.C., Feng, C.-C. and Wang, Y.-C. (2021). A socio-ecological perspective on COVID-19 spatiotemporal integrated vulnerability in Singapore. In: Shaw, S.L., Sui, D. (eds) *Mapping COVID-19 in Space and Time, Human Dynamics in Smart Cities*. Springer, Cham.
- Lett, E., & Everhart, A. (2022). Considerations for transgender population health research based on US national surveys, *Annals of Epidemiology*, <https://doi.org/10.1016/j.annepidem.2021.10.009>
- McDonald, Y.J., Anderson, K.M., Caballero, M.D., Ding, K.J., Fisher, D., Morkel, C., and Hill, E. (2022). A systematic review of geospatial representation of United States drinking community water system service areas. *AWWA Water Science*, <https://doi.org/10.1002/aws2.1266>.
- Nelson, S.E. & Rosenberg, M.W. (2021). Age-Friendly Cities and Older Indigenous People: An Exploratory Study in Prince George, Canada. *The Canadian Journal on Aging*, 41(2).
- Nelson, S. & Wilson, K. (2021). Rights and Health versus Rights to Health: Bringing Indigenous Peoples’ Legal Rights into the Spaces of Health Care Services. *Political Geography*, 85. <https://doi.org/10.1016/j.polgeo.2020.102311>
- Okafor, S. I., & Osayomi, T. (2021). Geographical Dynamics of COVID-19 in Nigeria. *Coronavirus (COVID-19) Outbreaks, environment and human behaviour: International Case Studies*, 327
- Osayomi, T., Adeleke, R., Akpoterai, L. E., Fatayo, O. C., Ayanda, J. T., Moyin-Jesu, J., ... & Popoola, A. A. (2021). A Geographical Analysis of the African COVID-19 Paradox: Putting the Poverty-as-a-Vaccine Hypothesis to the Test. *Earth Systems and Environment*, 1-12.



## Recent Publications by HMGSG Members \*

- Paxton, C., Anderson, K.M., and McDonald, Y.J. on behalf of the Vanderbilt University Drinking Water Justice Lab (Spring 2021) The Tennessee Public Water Operator Survey. Tennessee Utility News; Technology Issue (35), 36-39.
- Petrov, A, Welford, MR, Golosov, N, DeGroot, J, Devlin, M, Degai, T, Savelyev, A, 2021. The 'Second Wave' of the COVID-19 Pandemic in the Arctic: Regional and Temporal Dynamics. International Journal of Circumpolar Health. doi:10.1080/22423982.2021.1925446.
- Petrov, A, Welford, MR, Degai, T, DeGroot, J, Savelyev, A, 2020. Spatiotemporal Dynamics of the COVID-19 Pandemic in the Arctic: Early Data and Emerging Trends. International Journal of Circumpolar Health 79, Issue 1.
- Petrov, A, Welford, MR, Golosov, N, Devlin, M, DeGroot, J, Degai, T, Savelyev, A, 2021. Lessons on COVID-19 from indigenous and remote communities of the Arctic. Nature Medicine, Aug 23, 2021: doi:10.1038/s41591-021-01473-9.
- Ramírez, I.J., & Lee, J. 2021. COVID-19 and ecosyndemic vulnerability: implications for El Niño-sensitive countries in Latin America. International Journal of Disaster Risk Science, 12, 147-156. <https://doi.org/10.1007/s13753-020-00318-2>
- Ramírez, I.J., & Lee, J. 2021. Deconstructing the spatial effects of El Niño and vulnerability on cholera rates in Peru: Wavelet and GIS Analyses. Spatial and Spatio-temporal Epidemiology. <https://doi.org/10.1016/j.sste.2021.100474>
- Reid CE, Considine ED, Maestas MM, Li G. 2021. 2021. Daily PM2.5 concentration estimates by County, ZIP code, and census tract in 11 western states 2008-2018. Scientific Data. 8(1):112. doi: 10.1038/s41597-021-00891-1
- Ryckman, T., Karthikeyan, A., Kumar, D., Cao, Y., Kang, G., Goldhaber-Fiebert, J., John, J., Lo, N., Andrews, J. (2021) Comparison of Strategies for Typhoid Conjugate vaccine Introduction in India: A Cost-Effectiveness Modeling Study. Journal of Infectious Diseases 224 (Sppl\_5), S612-S624. doi:10.1093/infdis/jiab150
- Singleton, C.R., Winata, F., Roehll A.M, Adamu, I., and McLoughlin, G.M. (2022) Community- Level Factors Associated with Geographic Access to Food Retailers offering Nutrition Incentives in Chicago, IL. Preventing Chronic Disease, Vol. 19 (In Press)
- Wang, Y-C., Grundy-Warr, C., Namsanor, J., Kenney-Lazar, M., Tang, C.J.Y., Goh, L.Y.W., Chong, Y.C., Sithithaworn, P. Ngonkum, S., and Khuntikeo, N. (2021) Masculinity and misinformation: Social dynamics of liver fluke infection risk in Thailand. Parasitology International 84:102382.
- Winata, F., and McLafferty, S. L. (2021). Spatial and Socioeconomic Inequalities in the Availability of Community Health Centres in the Jakarta region, Indonesia. Geospatial Health vol. 16(2) <https://doi.org/10.4081/gh.2021.982>
- Xiao, Y., Chen, X., Li, Q., Jia, P., Li, L., & Chen, Z. (2021). Towards healthy China 2030: Modeling health care accessibility with patient referral. Social Science & Medicine, 276, 113834.
- Yang, X., Cao, Y., Liu R., Guo, M., Tang, L. (2021) Accessibility assessment of buildings based on multi-source spatial data: taking Wuhan as a case study. ISPRS International Journal of Geo-Information, 10 (10), 701. <https://doi.org/10.3390/ijgi10100701>

*\*All listed publications are self-reported by HMGSG members*

## Career Opportunities\*

### **Sarah Nelson**

- Master's research in qualitative research and/or health geography at University of Nebraska at Omaha.  
Contact: [snelson57@unomaha.edu](mailto:snelson57@unomaha.edu)

### **Yi-Chen Wang**

- Research Fellow position (<https://careers.nus.edu.sg/NUS/job/Kent-Ridge-Research-Fellow-%28Spatial-Health-and-Human-Dynamic%29-Kent/6517144/>)

*\*All listed job openings are self-reported by HMGSG members*

## Achievements\*

### **Avery Everhart** ( University of Southern California )

- Co-founded a non-profit academic think tank called the Center for Applied Transgender Studies, applied-transstudies.org, which launched in Spring of 2021.
- Center for Applied Transgender Studies have an inaugural cohort of 30 junior, senior, and distinguished fellows, and an incoming cohort of 10 more.
- Launched a platinum open-access journal called Bulletin of Applied Transgender Studies, the first issue of which will be published in Spring 2022.

### **Ivan J.Ramírez** ( University of Colorado )

- Guest editor for a special issue at the International Journal of Environmental Research and Public Health, entitled, "Urban Environmental Health and Climate Change":
- Seeking special issue at the International Journal of Environmental Research and Public Health, entitled, "Urban Environmental Health and Climate Change": [https://www.mdpi.com/journal/ijerph/special\\_issues/urban\\_environment\\_climate](https://www.mdpi.com/journal/ijerph/special_issues/urban_environment_climate).

*\*All listed achievements are self-reported by HMGSG members*

## Join the HMGSG Board

The AAG Health and Medical Geography Specialty Group (HMGSG) is looking for nominations to fill upcoming vacancies for the 2022-2024 board. This year we are seeking nominations for the following positions:

- 1 Vice-Chair
- 2 At-Large Board Members
- 2 Graduate Student Members
- 1 Webmaster (volunteer, no election)

The Vice-Chair serves a one-year term and transitions to Chair in the second year.

The At-Large and Student board members serve a two-year term.

The webmaster will serve as long as they wish (ideally, at least 2 years).

All HMGSG members are eligible and encouraged to nominate candidates (HMGSG members only) for these positions. Before your nomination, please contact the nominee to assure they are willing and available to serve if elected. Self-nominations are accepted.

If you are interested in serving in any of these positions, please send an email to Michael Desjardins ([mdesjar3@jhu.edu](mailto:mdesjar3@jhu.edu)) indicating the position of interest and a half-page bio for circulation to the membership at the HMGSG business meeting.

The deadline for submissions is February 18th, 2022. Please use "Nomination for HMGSG positions" as the subject of your email.

Please submit a bio-sketch/candidate statement that includes your full name, title and degree, institution, and research and teaching interests. Nominees will introduce themselves to the membership with a 1 to 2-minute oral statement to be delivered at the HMGSG Business Meeting. The election will be held during the HMGSG Business Meeting on February 28th, 2022 during the AAG annual meeting.

Thank you for your support of the HMGSG Specialty Group.

**Newsletter compiled by Shamayeta Bhattacharya**

For newsletter related questions email at: [shamayeta.bhattacharya@uconn.edu](mailto:shamayeta.bhattacharya@uconn.edu)